

Tring Park

Accessibility statement May 2018

This access guide does not contain personal opinions or recommendations regarding the accessibility of this wood but aims to accurately describe the access to, from and around Tring Park and any on-site or local facilities. Please bear in mind that accessibility can be affected by different weather conditions and seasons and by the impact of work regularly carried out at the site by Woodland Trust staff and contractors. The safety of our visitors, volunteers and staff is very important to us - please follow any on-site guidance.

Introduction

Tring Park is one of Hertfordshire's most important ecological areas and one of the Woodland Trust's most exciting and diverse sites. The 264- acre site is a mosaic of chalk grassland, mixed woodland and planned parkland. It is a place where everyone can find space, peace, wildlife and beautiful views to explore. Tring Park and the old manor house have a rich history, with Tring manor listed as early as 1086 in the Domesday book. Once a favorite country retreat for members of the Kings Court, Tring has kept many features added over the years such as a 'forest garden' landscape, an obelisk and a summer house. All visitors are welcome at Tring Park with free access 365 days a year.

Contents

1. Pre arrival
2. Getting to Tring Park
 - 2a. By train
 - 2b. By bus
 - 2c. By car
 - 2.d By bike
3. Arrival and Car Park
4. Nearest facilities
5. Entrances to Tring Park
6. Paths
7. Obstacles
8. Additional information



1. Pre arrival

Tring Park lies to the south of Tring. The site runs along the Chiltern ridge, and sits within the Chilterns Area of Outstanding Natural Beauty. The park and woodlands contribute greatly to the local landscape as they are visible from approaches to Tring, notably from the A41.

There are multiple entrances to the site all linking to either bridleways, public or permissive footpaths. If you are visiting Tring Park for the first time, we recommend you use the entrance leading over the A41 from the joint Woodland Trust and Natural History Museum at Tring car park on Hastoe Lane so that you can view our information board and site map.

Alternatively, if you are in the Natural History Museum at Tring, you can follow one of the recommended self-guided walks from there. A link to the Tring Park map is [here](#).

We do have livestock which graze on site at Tring Park. In the main parkland area we use cows, and in a smaller isolated area known as Oddy Hill, we use Sheep. If you would like to find out more about visiting an area with livestock please visit NFU website [here](#).

2. Getting to Tring Park

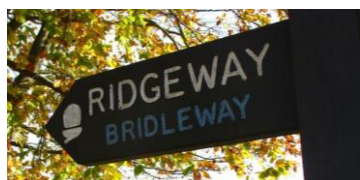


2.A by Train

Regular trains run to Tring station which is approximately 2 miles away from Tring Park (Station Road, Tring, HP23 5QR).

Tring station is on the London Midland suburban rail line and is served by London Euston, Watford, Milton Keynes, Northampton and Birmingham. Check travel websites to get up to date journey information before departure. For information on train times please contact National Rail on 08457 484950 or visit the National Rail website.

From the station it is approximately a 7-minute taxi ride or a 45-minute walk. Walking to Tring Park from the station is possible by using part of the Ridgeway National Trail. From the train station follow the acorn symbol for the Ridgeway National Trail towards Wendover.



2.B by Bus

There are several options for travelling by bus to Tring Park. The recommended route depends on where you are visiting us from. No. 389 Aldbury to Tring, No. 500 Watford to Aylesbury or No. 61 Aylesbury to Dunstable; all of these buses go via Tring. Please check all travel details on the [Traveline](#) website.



Once you have arrived in Tring, head towards the 'Natural History Museum at Tring'. At the junction at the top of Akeman street look to your left and you will see a gate on the right hand side of the road which takes you through to the joint Woodland Trust and Natural History Museum's car park. To enter the site from the car park, follow the alleyway along the fence line and over the A41.

Alternatively, if you were to get the bus to Wigginton you could access Tring Park from here by walking along Wick Road and turning right onto Common Field. At the end of this road where it meets Highfield road on the corner, there is a private road to the left called 'Upper Tring Park'. You can walk along here to our site entrance which will be on your right hand side. Please note there is no map at this entrance.



2.C By Car, taxi or coach

If travelling by car to Tring Park, the nearest post code is HP23 6AP. If following a sat nav, this postcode will take you to the Natural History Museum at Tring but our joint car park is just around the corner on Hastoe Lane.

The car park has a 10mph speed limit and a single track loop. Please take note of the right of way clearly indicated to allow safe and efficient transport around the car park. The parking bays themselves come off the main loop and provision is made for family and disabled parking bays.

Both Tring Park and the Natural History Museum at Tring have brown signage directing visitors once you are off the A41.

If you are visiting for the first time we recommend that you use this car park and entrance to get to Tring Park.

There are other entrances to Tring Park which are not close to this car park. Whilst there is no site designated parking near these, there are places you can leave your car if you feel comfortable to do so, and at your own risk. Please refer to section 5 for more information on these entrances.



2.D By Bicycle

The towpath of the Grand Union Canal offers a scenic, flat and traffic-free route for cycling if coming from Leighton Buzzard or Watford direction. Some areas of the tow path can be particularly rough ground and muddy so please take extra care on these parts. The towpath is used frequently by walkers so please also keep to a leisurely pace, particularly when near to a town area.

Whether you are travelling from the north or south, come off the canal at Station Road and continue towards the High Street (B4635). Once on the High Street please take extra care as

this is a busy road and whilst traffic is not fast moving there are a lot of zebra crossings, pedestrians on narrow pavements, and often delivery vehicles to the local shops, café's and restaurant's.

Follow the brown signage, by turning left onto Akeman Street and continue along here until you reach



the main entrance of the Natural History Museum at Tring. Turn left onto Park Street. There is a small gate on the right hand side of the road which takes you through to the joint Woodland Trust and Natural History Museum's car park. There are several bike stands here where you are welcome to store a bike for the duration of your visit.

For those of you who would like to cycle through Tring Park, you are welcome to do so on King Charles Ride, which is also part of the Ridgeway National Trail. This 1-mile stretch of bridleway takes in some magnificent views of the local area and is a fairly flat, semi-surfaced, wide path. Please take care when cycling on this path as it often has walkers and horse riders present.

Please note that this is the only path that cycling is permitted on in Tring Park. To get to this, continue on from the Natural History Museum at Tring entrance on Akeman Street and follow the sharp right hand bend round. Turn immediately left on to Hastoe Lane and continue for around 0.5 miles. At this point bear left on to Marlin Hill and continue for another 0.4 miles. The entrance to Tring Park will be on the left hand side of the road. Please note that this route is particularly hilly and is a narrow road so take extra care of vehicles.

3. Arrival and Car park

The free joint Woodland Trust and Natural History Museum at Tring car park provides parking for 30 cars with 4 designated for blue badge holders. These spaces are clearly marked with a blue badge logo. There are no time restrictions on length of parking for visitors to the site, just be sure to check the car park closing times shown below.



This car park becomes particularly busy during school holidays, and if you should find that it is full, please use alternative car parks in Tring town centre.

If you are visiting with a dog, please also keep him/her on a lead when in the car .



The Woodland Trust and Natural History Museum at Tring does not accept responsibility for any vehicle or bicycle left in the car park and we politely remind visitors not to leave any valuables on display.

The car park is managed by the Natural History Museum at Tring and the opening and closing times are listed below. The closing time is also clearly displayed on the welcome sign to the car park from Hastoe Lane for your convenience.

From the car park access to the park is via a narrow walkway leading over the A41. A footbridge with wide concrete steps takes you over the road and into Tring Park.

Car Park Opening Hours	
Day	Opening time
Monday – Saturday	10am – 5pm
Sunday	2pm – 5pm

Nearest Facilities



The nearest toilets are in the Natural History Museum at Tring which are open from 10am – 5pm Monday to Saturday. There are also toilets in Tring Forge car park, including some **disabled and baby change facilities**. The forge car park is 0.5 miles from the entry to Tring Park.



There are plenty of pubs and café's in the Tring area. For individual information about each of them, or to request accessibility information please see the relevant websites or contact them directly. A list of food & drink establishments in Tring is available here: https://www.tripadvisor.co.uk/Restaurants-g503883-Tring_Hertfordshire_England.html

Please note the views on trip advisor are individual opinions and not the views of The Woodland Trust.

4. Entrances to Tring Park

There are nine entrances to Tring Park, as highlighted by the map below, which all include different access methods.



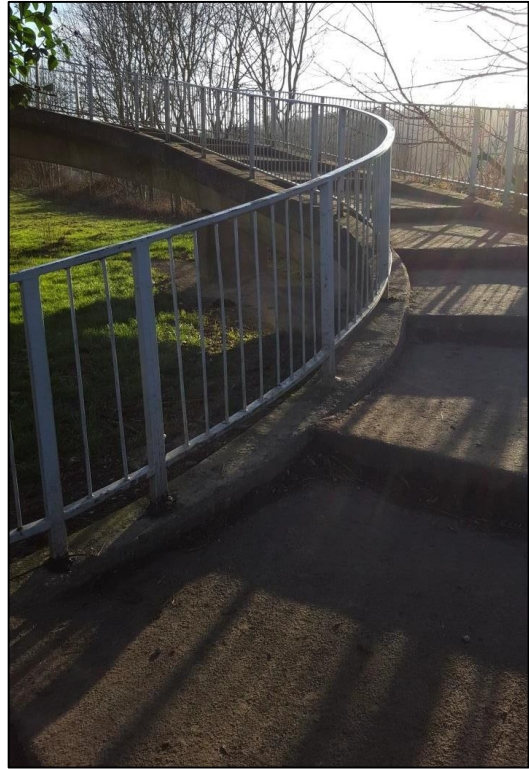


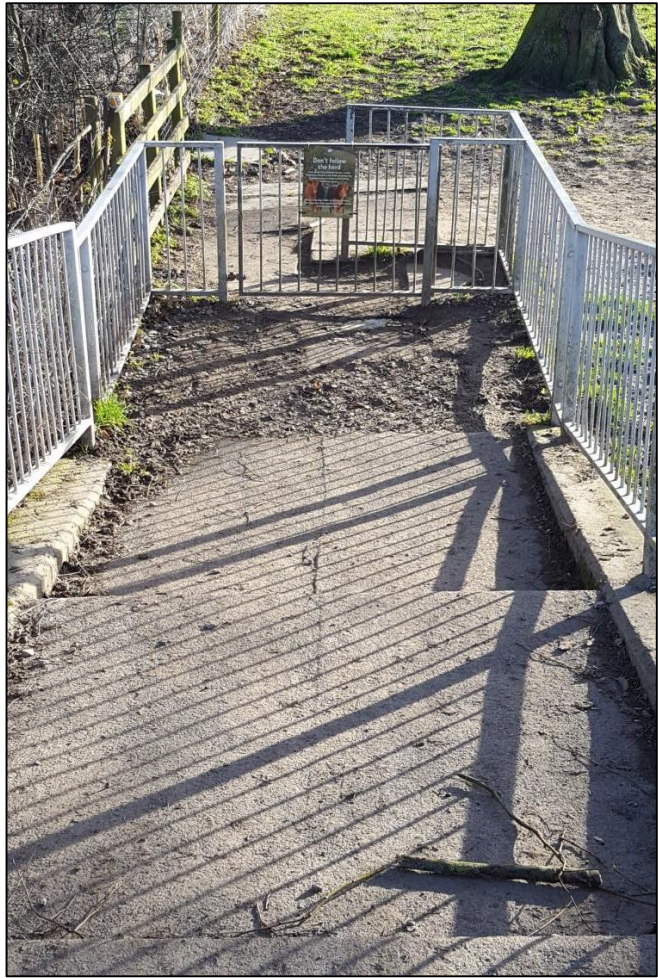
Main Entrance

The main entrance to Tring Park is via the path at the side of the joint car park. This entrance can be accessed and used by visitors with lightweight pushchairs, however does require them to be lifted over two kissing gates on the park side of the A41 bridge.

The path over the bridge is surfaced but has become uneven and potholed over years of use. There are steps at either end of the footbridge. The bridge and steps have handrails on both sides. Both the path and the footbridge are currently managed by Highways and are not owned by the Woodland Trust.







Hastoe Lane entrance (1):

The first entrance along Hastoe Lane requires walking under the A41 instead of over it, and can be accessed directly off the pavement on the left hand side. There are 11 shallow steps that lead to a wooden kissing gate, with handrails on both sides.

This route takes you across a field and to a metal kissing gate which enters into Tring Park at the same point as the main entrance mentioned above.



Hastoe Lane entrance (2):

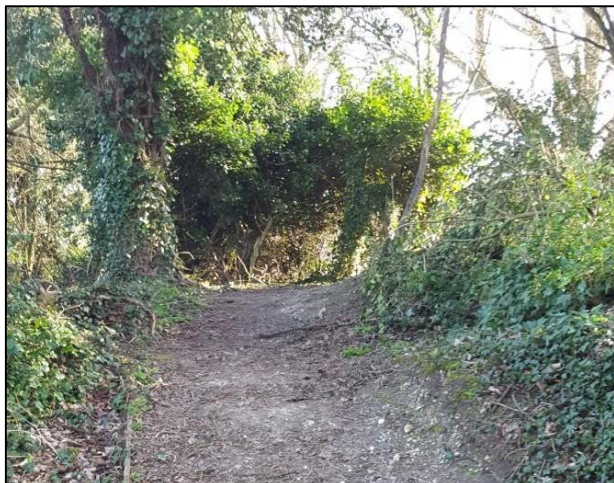
There is no site specific parking at this entrance, but there is an area opposite which you can leave your car should you feel comfortable to do so. This area is very uneven, and is only suitable for raised vehicles such as 4x4's, or vehicles with raised ground clearance.

We do not advise travelling on the road to this entrance unless you are in your car; there is no pavement on Hastoe Lane.

The path leading to the kissing gate has been ramped from the road and is semi-surfaced providing a solid base in all seasons. This entrance will bring you in to Tring Park at the top of the lime avenue.



Possible parking area



Marlin Hill entrance (1):

The first entrance off Marlin Hill brings you in to Tring Park at the top of the parkland.

There is a kissing gate which takes you into the parkland, or there is a permissive bridleway which runs directly into the woodland. Cyclists and horse riders are welcome to use this bridleway. There is no kissing gate for this path, but there is a horse hop.

There is no site specific parking at this entrance, but occasionally people do park on the side of the road if you feel comfortable to do this.

We do not advise travelling on the road to this entrance unless you are in your car; there is no pavement on Hastoe Lane/Marlin Hill.

The paths leading from these entrances are unsurfaced and can get muddy and slippery in wet or adverse weather.



Marlin Hill entrance (2):

The second entrance off Marlin Hill brings you in to Tring Park on the main path through the woodland. This is also where the Ridgeway National Trail enters/leaves the site.

There is no kissing gate at this entrance. Instead there is a horse hop to the left hand side of the management entrance and a 'squeeze point' to the right, both of which takes you into the woodland.

This path is a bridleway and as such, cyclists and horse riders are welcome on it. It is semi-surfaced and in good condition.

There is no site specific parking at this entrance, or on the roads surrounding it, so it is suggested that this route is best for local walking. Please do take extra care as there are no pavements around this area either.



Wick Road Entrance

This entrance is accessed off of Wick Road, a private road in Wigginton. Whilst there is no parking or vehicular access to this entrance. On street parking is available nearby in if you feel comfortable to park here.

This route is much flatter in comparison to other entrances at Tring Park and the road section is tarmac. The actual entrance to Tring Park is off this road and across an arable field. This section is un-surfaced.

At the boundary to the woodland edge there is a kissing gate. Once through this the woodland path leads you in to the site. Please note that this path, although flat is unsurfaced. The map for this entrance is approximately 50 meters past the kissing gate into the wood.



Upper Tring Park entrance

This entrance is also accessed off a private road. Upper Tring Park leads off of the corner of Highfield Road and Common Field in Wigginton and our entrance is on the right hand side.

There is no kissing gate, horse hop or 'squeeze point' at this entrance, instead there is a chicane fence. The path is semi-surfaced until you get further into the woodland.

This entrance is also a lot flatter than many of the others at Tring Park.

Whilst there is no parking or vehicular access to this entrance there is on street parking available nearby if you feel comfortable to park here. Please note that there is a school on Common Field so the surrounding roads may become increasingly busy at school start and finish times.



Fox Road Entrance

This entrance is our third entrance accessed off a private road. The small unmade road leads directly off Fox Road and whilst there is no parking or vehicular access to this entrance there is on road parking available nearby if you feel comfortable to park here. However, this road can be particularly busy.

This entrance is fairly flat and there is no kissing gate, horse hop or 'squeeze point' and is also where the Ridgeway National Trail enters/leaves the site. The path leading from this entrance is semi-surfaced, but can get muddy in wet weather around the entrance itself



Oddy Hill Entrance

This entrance is directly off Fox Road and enters the site next to our small isolated chalk grassland area known as Oddy Hill.

Whilst there is no parking or vehicular access to this entrance there is on road parking available further up the road if you feel comfortable to park here. However, this road can be particularly busy.

This entrance is off of a fairly steep hill and there is no kissing gate or horse hop, instead there is a 'squeeze point'. There is a pavement that leads to this entrance; however, there are small sections further along the road where there is none. The path leading from this entrance is unsurfaced. If you continue straight on this path, it becomes a steep downhill route so please take care on here.



5. Paths

The paths at Tring Park are a variety of surfaces and gradients. Please see path grading information for the 4 main trails below.

The main path through the woodland (King Charles Ride) is also a bridleway and is the only path cyclist's and horse riders are permitted on. The majority of the walks do include a relatively steep incline, the ridgeway is the most accessible trail.

Keeping to marked paths helps us care for and protect the parkland and woodland. Visitors and dogs should avoid creating and using 'desire line' paths that can often disturb ground nesting birds and rare plants. This also helps us to protect the areas where species lay dormant until the spring or summer.

Parkland walk



1.5 miles/2.4 Km. Allow 30-45 minutes.

Meander along the parkland edge which comes alive in summer with wildflowers, butterflies in the long chalk grassland and kites soaring overhead. Some moderate slopes. Mixed chalk grassy surface that can become muddy after rain.

Woodland Walk

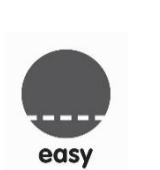


2.5 miles/4.1 Km. Allow 1.5 – 2hours

A longer route which takes you deeper into Tring park. Experience the contrast between quiet ancient woodland and wide open parkland. Take in the sights of the Summer House, Obelisk and restored King Charles Ride.

A circular route with one fairly steep climb regardless of direction. Varied surfaces which can become muddy under foot. Two kissing gates.

Ridgeway National Trail



1 mile/ 1.6 Km. Allow 30 minutes (one way)

This short section of the full 87-mile ridgeway passes along King Charles Ride giving you superb views of Ivinghoe Beacon. Either turn round at either end, or continue on the ridgeway trail out of Tring Park.

A wide & mostly smooth path that consists of compressed chalk. Generally dry with short gentle gradient changes.

Walters Wander



1.8 miles/ 3 Km. Allow 1 – 2.5 hours

Walters footprints lead the way from the Natural History museum and into his old family estate. Stunning views greet you on the ridgeway. Stop at the natural play area to rest on a tortoise and find the hidden owl.

A grassy path with some tree roots. One kissing gate, vigorous climb and steep downhill section. Benches provide rest stops with beautiful views.

6. Obstacles

Steps

There are steps at 2 of our site entrances as mentioned above. There are also steps at our viewpoints if you wish to take the steep paths directly back into the park.

Kissing gates

Four of our entrances use kissing gates to access the site. One of these has been modified to allow for a mobility scooter to fit through (as mentioned in the more in depth entrance information above). Due to having livestock on site for management reasons, there are also kissing gates between the parkland and the woodland to prevent their escape. The one leading towards the Obelisk has been modified to allow for a mobility scooter, however all others are currently unsuitable for this use. **Please do ensure that you close all gates behind you.**

Livestock

Livestock are on site for the majority of year and are carrying out important conservation work for our chalk grassland management. Cows can be found in the main parkland area and sheep can be found grazing on our smaller more isolated Oddy Hill area.

For more general information about visiting a site with livestock please visit the NFU website [here](#).

Pregnant ladies are advised to stay away from livestock and to wash their hands as soon as possible after leaving site and before eating.

7. Additional information

Benches

There are a number of benches around Tring Park, with the closest a 10- 15-minute walk from the car park.

Dogs

Dogs are welcome guests at Tring Park. The vast majority of the site allows dogs off lead – however we do ask that you have dogs under control and preferably on lead near livestock. We ask that you walk no more than four dogs at once and please pick up after them and take the bags home with you. Dog poo bins can be found at the entrance at the bottom of Hastoe Lane and on the alleyway which connects the car park with Tring Park.

Horses

Horses are welcomed on the public bridleway through the woodland (King Charles Ride) and the recently installed permissive bridleway off Marlin Hill. Horses are not permitted on any other footpaths, including the other paths through the woodland and parkland. The bridleways are also used by pedestrians and cyclists.

In an emergency

There are no Woodland Trust members of staff who are based at Tring Park e.g. rangers. If you require immediate medical attention, please call 999.

The nearest hospital is:

Stoke Mandeville, Mandeville Rd, Aylesbury HP21 8A

Tel: 01296 315000

Note: mobile reception is generally good in most areas of Tring Park

Contact details

Further details about Tring Park, volunteering opportunities and the Woodland Trust are available at www.woodlandtrust.org.uk. This access guide is updated biannually by the site team. If you have any queries or require this document in large print or in a different format, please contact us at tringpark@woodlandtrust.org.uk or phone 0330 333 3300, quoting Tring Park. Alternatively, you can write to us at:

The Woodland Trust
Kepton Way
Grantham Lincolnshire
NG31 6LL

We welcome suggestions on ways in which we could improve your experience of the site